

SPEC SHEET + MEASUREMENTS

PORT AUTHORITY.

Port Authority® Women's Core Soft Shell Vest. L325

Product photo



Keep your core warm and protected from the elements in this versatile vest that's easy on the budget.

- 100% polyester woven shell bonded to a water-resistant film insert and a 100% polyester microfleece lining
- 92/8 poly/spandex woven shell bonded to a water-resistant film insert and a 100% polyester microfleece lining (Heathers)
- 1000MM fabric waterproof rating
- 1000G/M² fabric breathability rating
- Wind-resistant and water-repellent
- Reverse coil zippers
- Zip-through cadet collar with chin guard
- Front zippered pockets
- Open hem

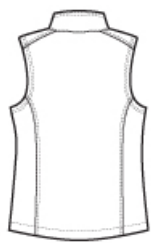
CARE INSTRUCTIONS

Machine wash cold with like colors, only non-chlorine bleach when needed. Tumble dry medium. Cool iron if necessary.

Sketches



front



back

SPEC SHEET + MEASUREMENTS

PORT AUTHORITY

Port Authority® Women's Core Soft Shell Vest. L325

PRODUCT MEASUREMENTS

	XS	S	M	L	XL	XXL	3XL	4XL
Body Length at Front	24 1/4	24 3/4	25 1/4	26 1/4	27 1/4	28 1/4	28 3/4	29 1/4
Bust	17	18	19	20 1/2	22	23 1/2	25 1/2	27 1/2
Size	2	4/6	8/10	12/14	16/18	20/22	24/26	28/30

Body Length at Front: Measure from high point shoulder to lowest point of hem at front.

Bust: Measured across the chest one inch below armhole when laid flat.

SIZE CHARTS

	XS	S	M	L	XL	XXL	3XL	4XL
Bust	32-34	35-36	37-38	39-41	42-44	45-47	48-51	52-55
Size	2	4/6	8/10	12/14	16/18	20/22	24/26	28/30

SPEC SHEET + MEASUREMENTS

PORT AUTHORITY.

Port Authority® Women's Core Soft Shell Vest. L325

HOW TO MEASURE



BUST

Measure under the arm and around the fullest part of the bust with arms down, keeping tape horizontal.

COLORS

Please note: PMS code information is shown only when an exact match is available.



Battleship
Grey
PMS 7540 C



Black
PMS BLACK
C



Black
Charcoal
Heather
PMS 426C



Dress Blue
Navy
PMS 533C



Marshmallow
PMS COOL
GRAY 1C